



- LEGEND**
- - - SITE BOUNDARY
 - PAVER ON PEDESTAL TO MATCH ARCHITECTURE FINISHES
 - SCREENING PLANTS
 - ACCENT PLANTS
 - POOL SIDE UNDERSTORY PLANTS
 - LOW HEDGES
 - SHADE TOLERANT PLANTS

INDICATIVE PLANT PALETTE

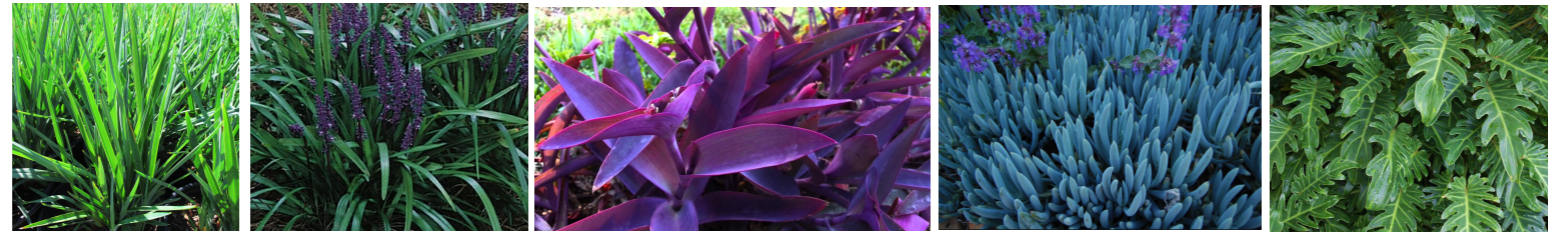
LOW HEDGES (NARROW ACCESS ZONES)



Acmena 'Allyn Magic'

Westringia Grey Box

GROUNDCOVERS (BALCONIES)



Dianella Little Rev

Liriope muscari

Tradescantia pallida 'purple heart'

Senecio serpens

Philodendron 'Xanadu'

SCREENING PLANTS



Alpinia sp.

Bambusa sp.

Howea forsteriana

ACCENT PLANTS



Agave attenuata

Cycas revoluta

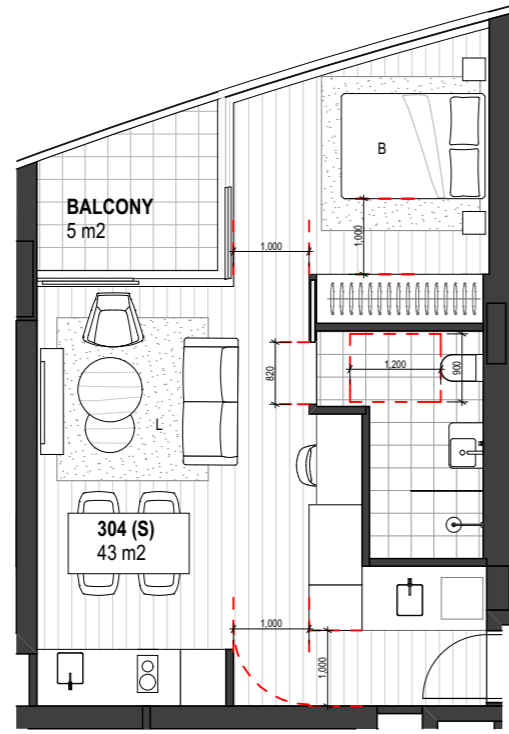
Zamia furfuracea

CASCADING / TRAILING PLANTS (BALCONIES)

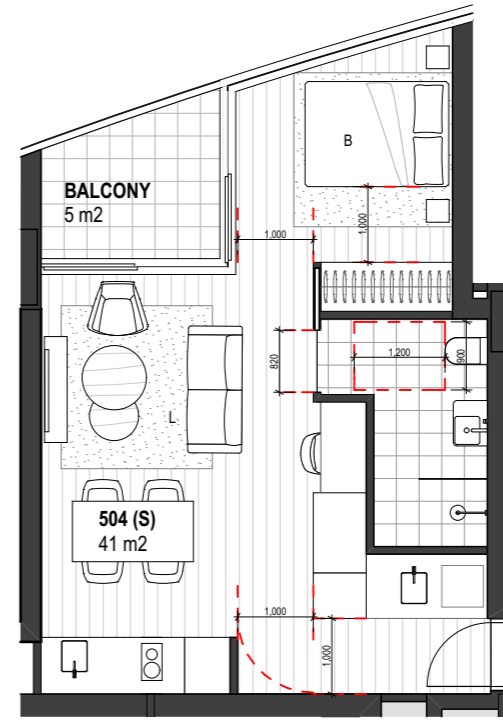


Dichondra Silver Falls

Trachelospermum jasminoides

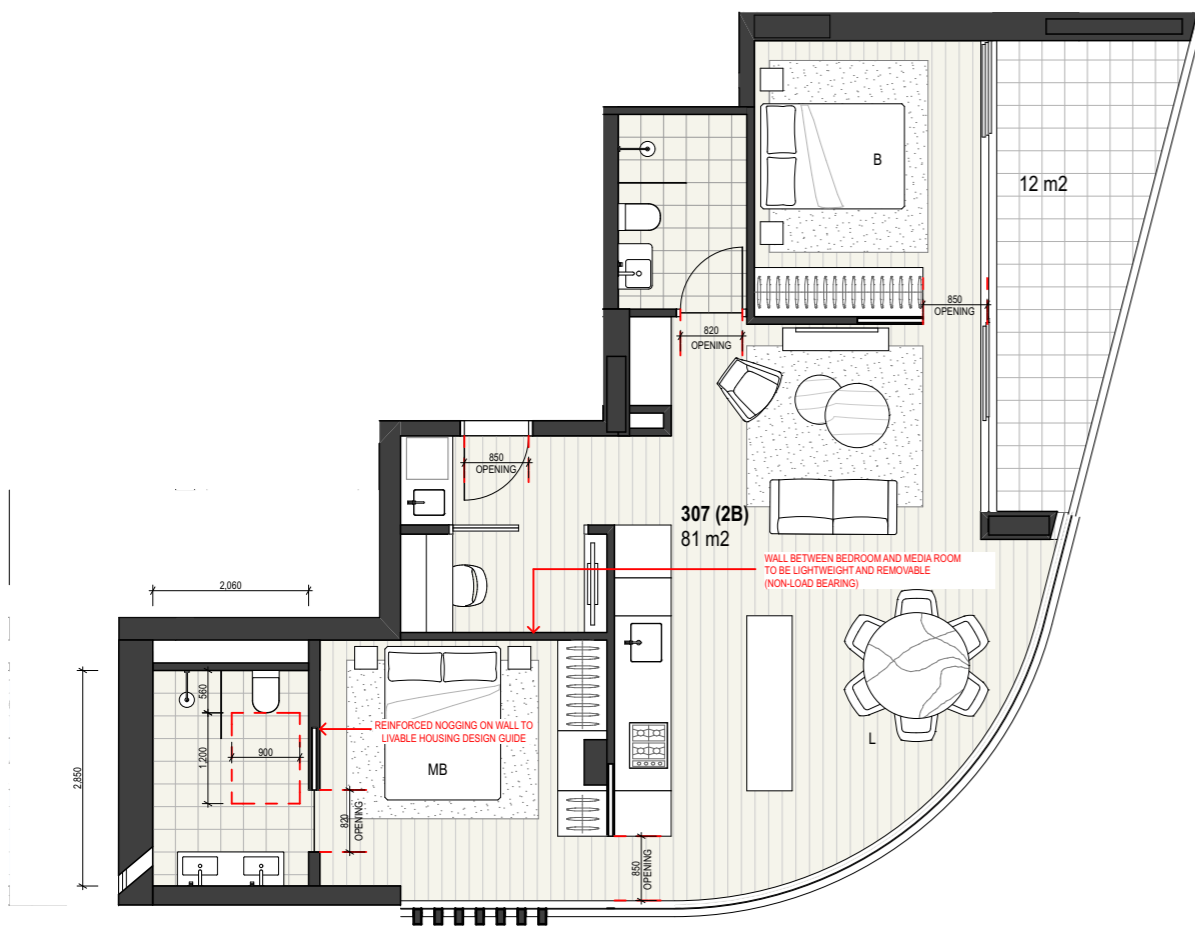


Type E STUDIO
LIVABLE UNIT

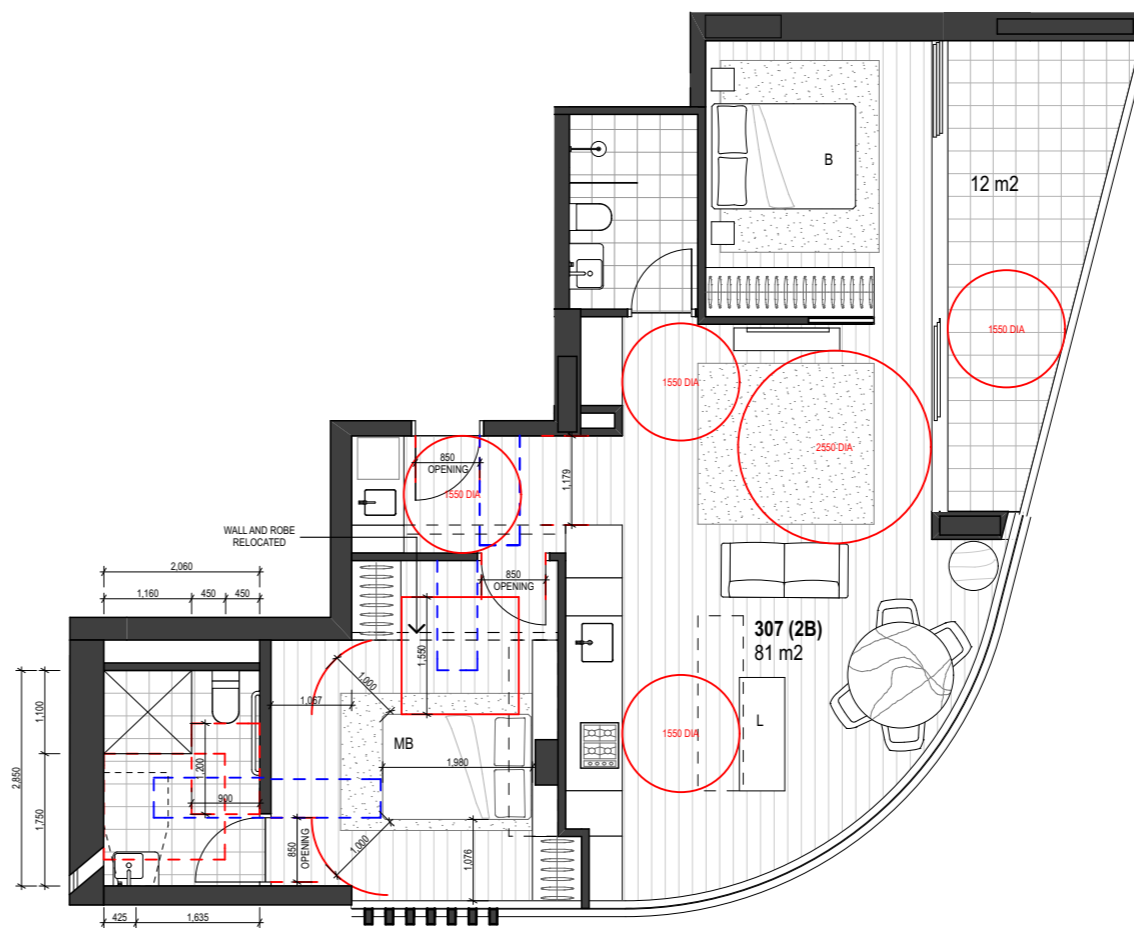


Type C STUDIO
LIVABLE UNIT

| | |
|--|--------------------------------------|
| Total number of residential apartment | 111 |
| Required number of adaptable units | 12 |
| | |
| Level 3 - 19 | 1 adaptable apartment per floor (17) |
| Total number of adaptable apartment provided | 17 |
| | |
| Required number of livable units | 23 |
| Level 3 - 7 | 2 liveable apartment per floor (10) |
| Level 7 - 19 | 1 liveable apartment per floor (13) |
| Total number of livable apartment provided | 23 |



Type E, C, B, A 2 BEDROOM
PRE-ADAPTATION & LIVABLE UNIT

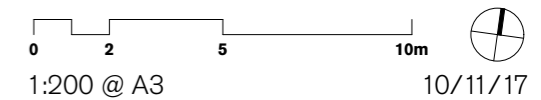


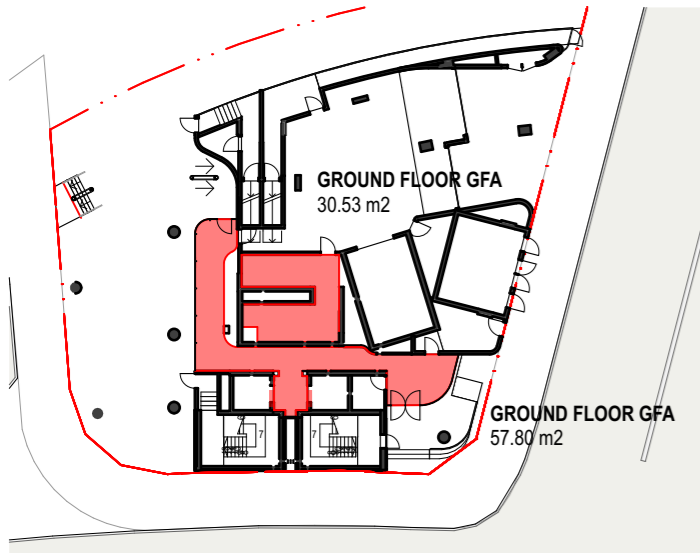
Type E, C, B, A 2 BEDROOM
POST-ADAPTATION UNIT

Type E, C, B, A 2 BEDROOM
POST-ADAPTATION UNIT
ALTERNATIVE BEDROOM CONFIGURATION

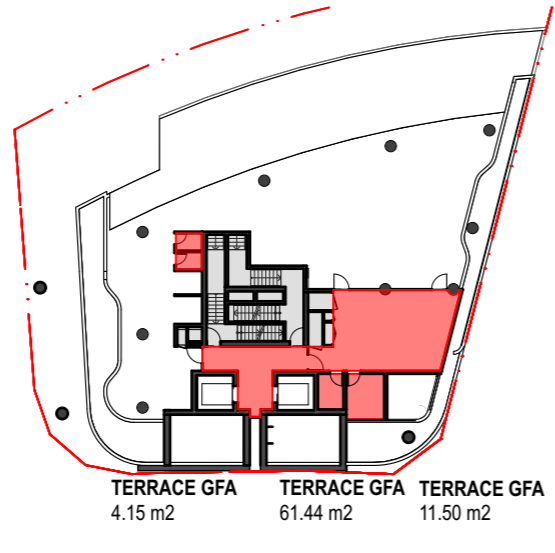


Adaptable & Livable Apartments

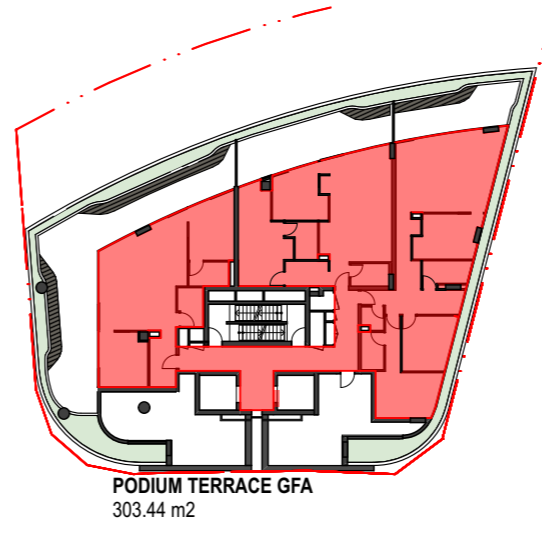




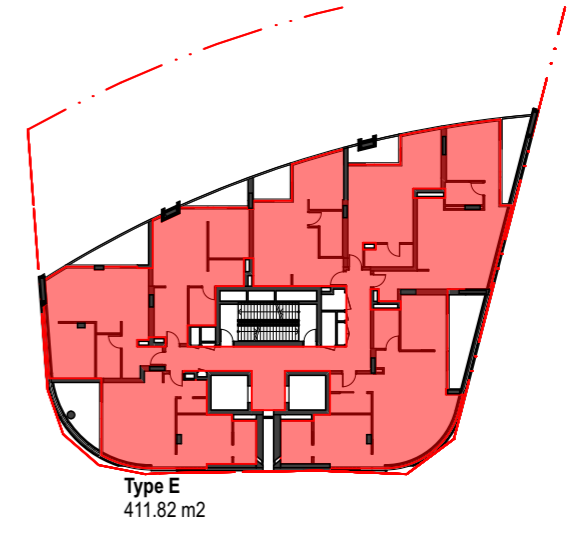
Ground Floor
1:500



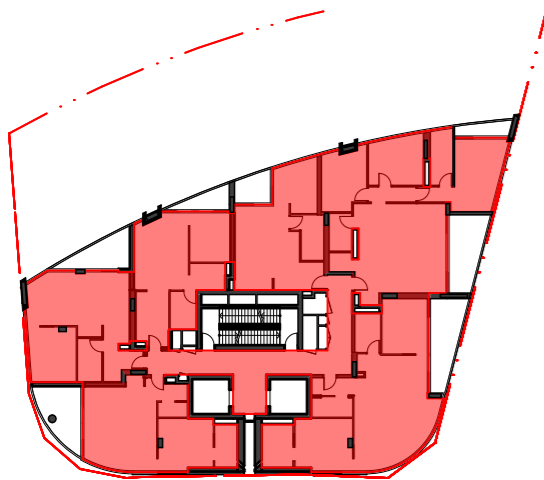
Terrace
1:500



Level 02
1:500

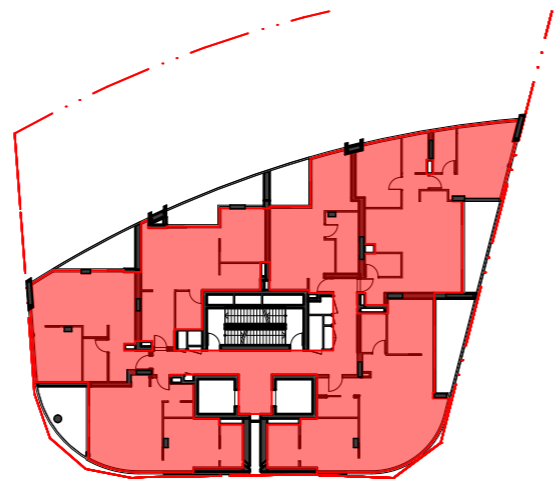


Level 03-04
1:500



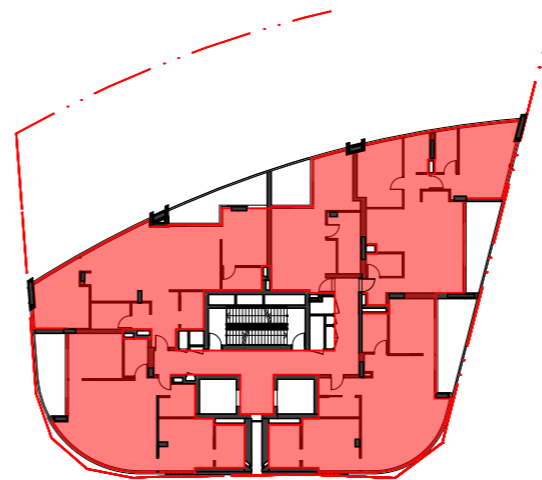
Type C
409.47 m2

Level 05-07
1:500



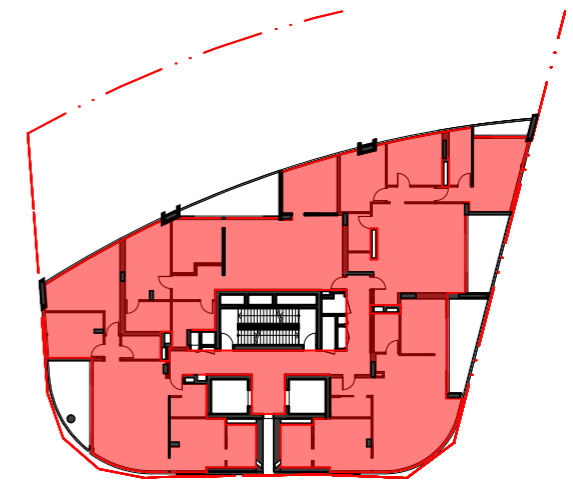
Type B
404.45 m2

Level 08-18
1:500



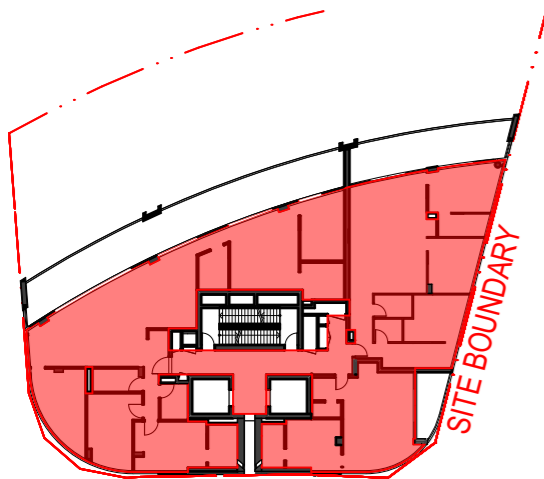
Type A
414.68 m2

Level 19
1:500



TOWER LEVEL 20 GFA
415.06 m2

Level 20
1:500



TOWER LEVEL 21 GFA
375.44 m2

Level 21
1:500

| CURRENT REVISION COMMENTS | | |
|--|-------------------------|----------|
| Rev | Current Revision | Date |
| 5 | Development Application | 13.07.18 |
| 1. REDUCED GFA IN GROUND FLOOR DUE TO WESTERN OVERLAND FLOW PATH | | |
| 2. LEVEL 1: GYM MANAGER'S OFFICE AND BATHROOM COUNTED FOR GFA. | | |
| 3. INCREASE OF GFA IN LEVEL 2 | | |
| 4. RESIDENTIAL LEVELS GFA UPDATED. | | |

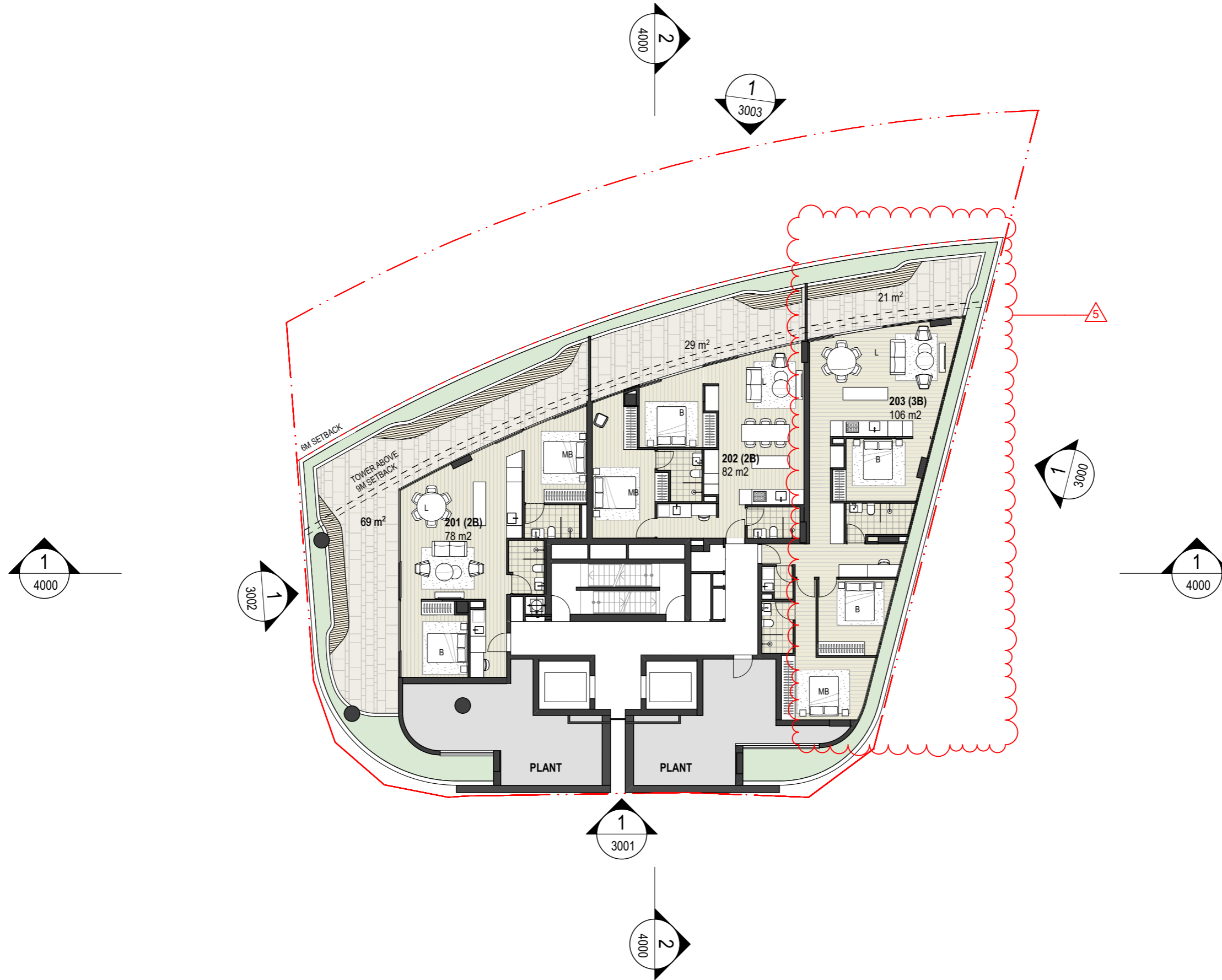
| LEGEND | |
|--------|--|
| ① | FLOOD-PROOF FIRE DOORS |
| ② | REMOVABLE FLOOD BARRIER |
| ③ | PLANTERS TO BE FLUSH WITH ADJACENT PAVING. REFER TO LANDSCAPE ARCHITECT'S DRAWINGS |
| ④ | SLOPING FLOOR TO ASSIST CLEANING AND OPENABLE BARRIER TO PREVENT ACCESS |



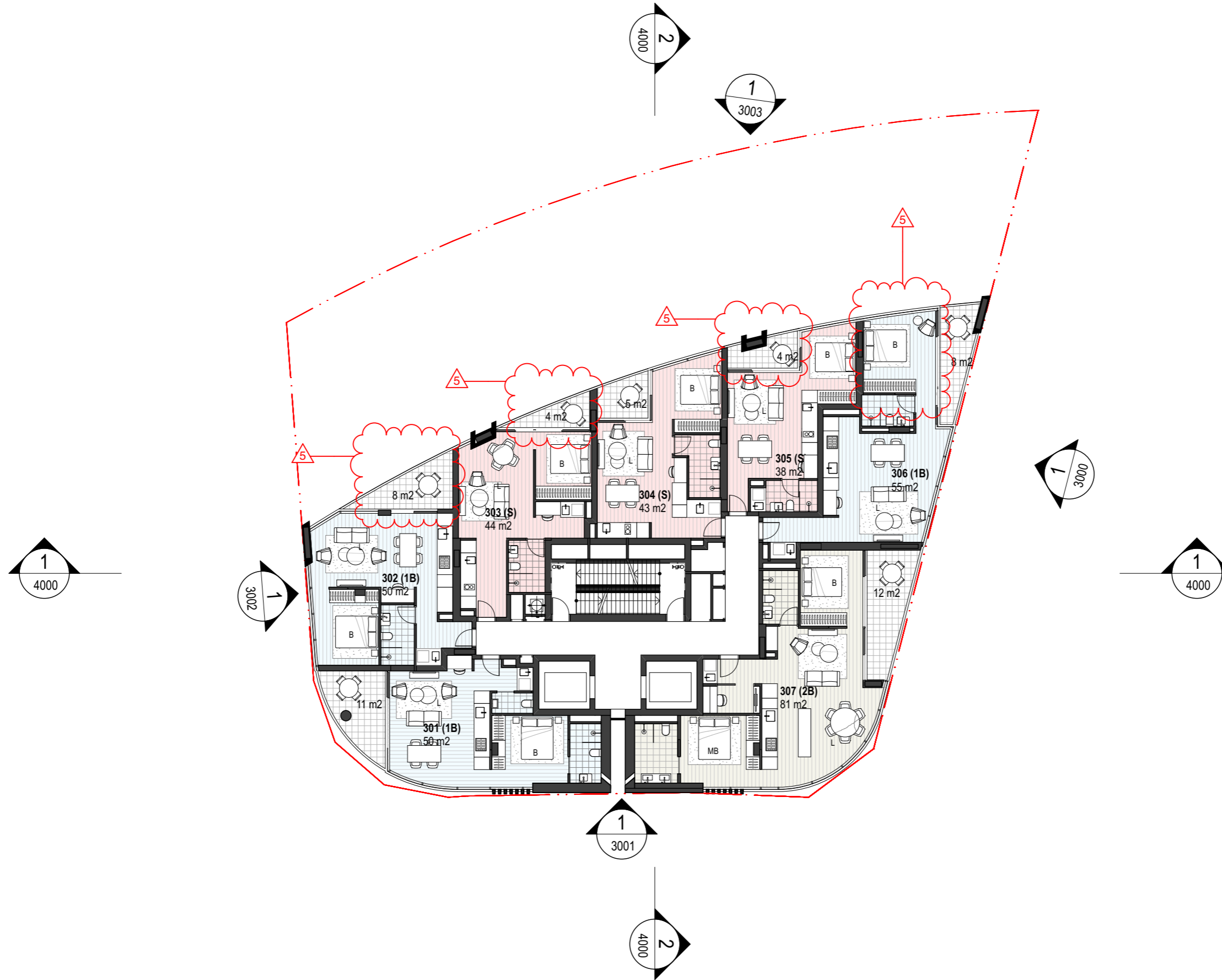
| CURRENT REVISION COMMENTS | | |
|--|-------------------------|----------|
| Rev | Current Revision | Date |
| 5 | Development Application | 31.07.18 |
| 1. 9M SETBACK FROM WESTERN BOUNDARY FOR OVERLAND FLOW PATH. | | |
| 2. REVIEWED DRIVEWAY AND GROUND FLOOR RLs TO ACCOMMODATE RUBBISH COLLECTION REQUIREMENTS | | |
| 3. TURNTABLE ADDED FOR SRV TURNING | | |
| 4. RL GROUND FLOOR CHANGED TO RL8.25. | | |
| 5. NORTH PATH ACCESS MODIFIED. | | |
| 6. ACCESSIBLE LIFT ADDED TO EAST ENTRY. | | |
| 7. SUBSTATION, FIRE CONTROL ROOM AND BOOSTER VALVE RELOCATED. | | |
| 8. WATER METER AND GAS REGULATOR RELOCATED. | | |
| 9. BIKE PARKING RELOCATED. | | |
| 10. SERVICES WEST OF CAR LIFT MODIFIED. | | |
| 11. NOTES ADDED FOR FLOOD PROTECTION. | | |
| 12. GLAZED FACADE FROM EAST LOBBY TO LANDSCAPED ZONE. | | |
| 13. RELOCATED MAILBOXES | | |
| 14. NEW STAIRS TO WEST LOBBY ACCESS | | |

Civil work as completed by RMS

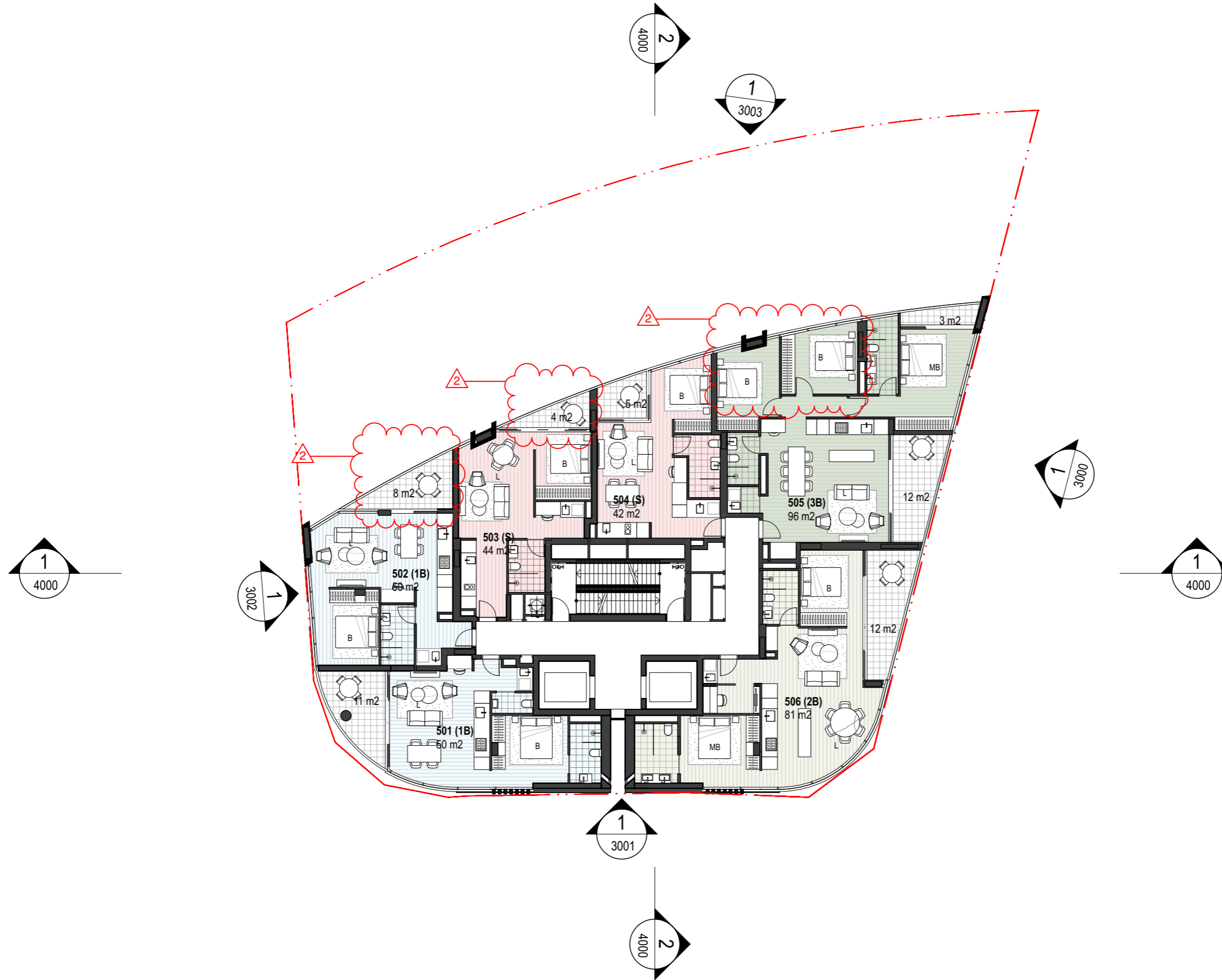
Pavement is indicative only. Please refer to Public Domain drawings



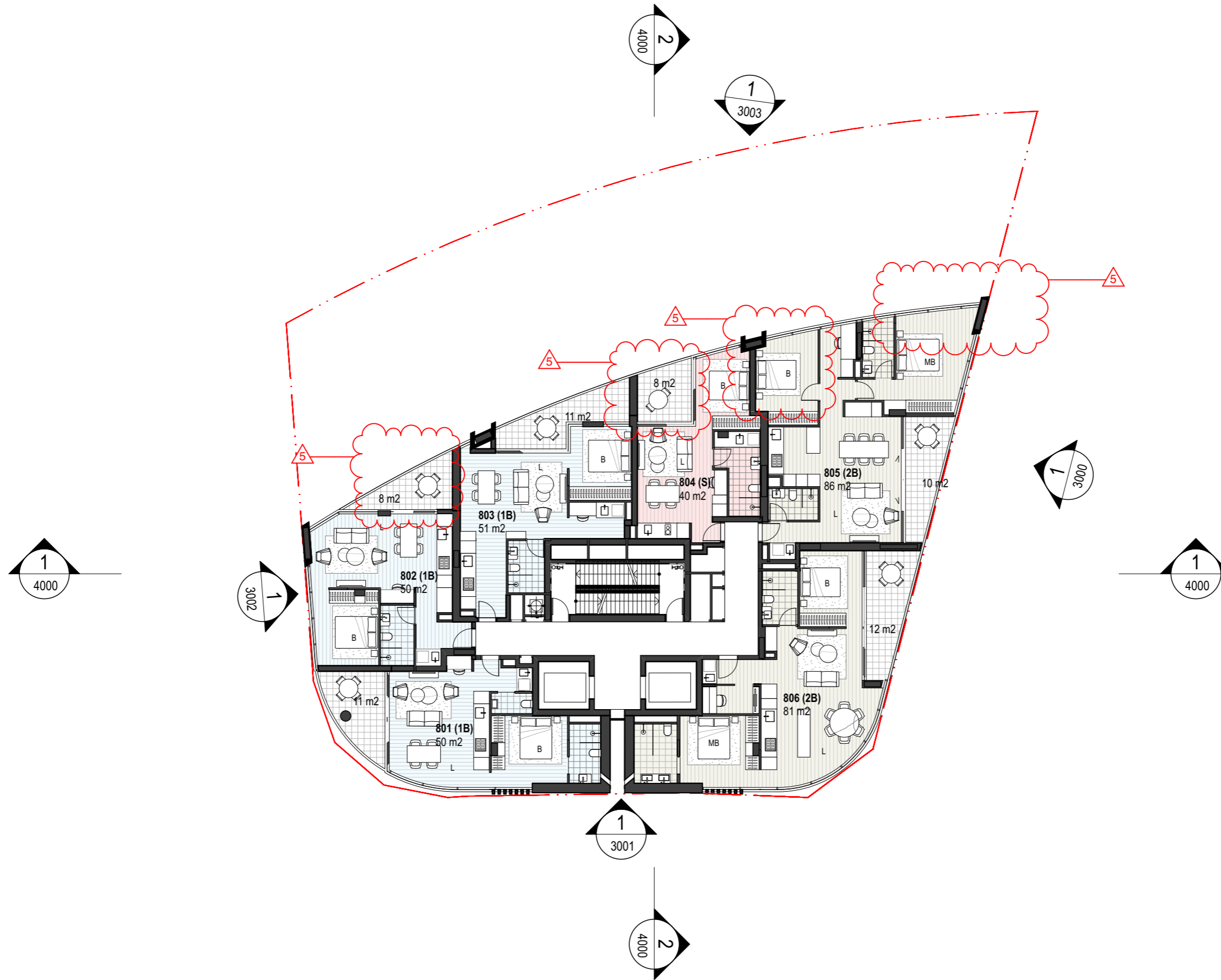
| CURRENT REVISION COMMENTS | | |
|---|-------------------------|----------|
| Rev | Current Revision | Date |
| 5 | Development Application | 06.07.18 |
| 1. LEVEL 2 INTERNAL LAYOUT CHANGED. UNIT 203 CHANGED TO 3-BEDROOM. UNITS 201 AND 202 HAVEN'T CHANGED. | | |



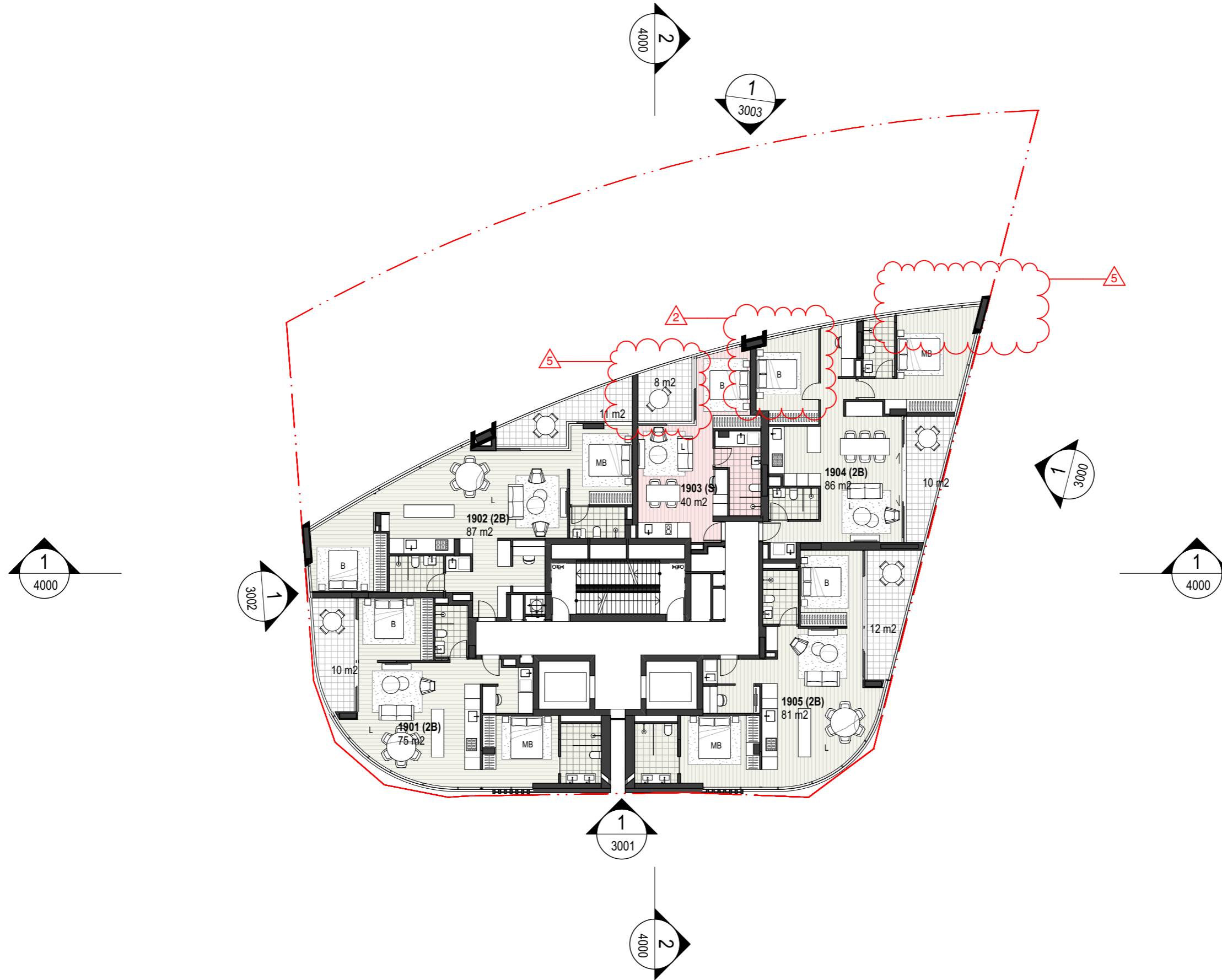
| CURRENT REVISION COMMENTS | | |
|---|-------------------------|----------|
| Rev | Current Revision | Date |
| 5 | Development Application | 05.07.18 |
| 1. UNIT 306 MODIFIED TO ACCOMODATE 3x3m IN BEDROOM. | | |
| 2. BALCONIES UNITS 302, 303 AND 305 MODIFIED TO ACHIEVE 1m DEPTH FOR BALCONY COUNTED AREA | | |



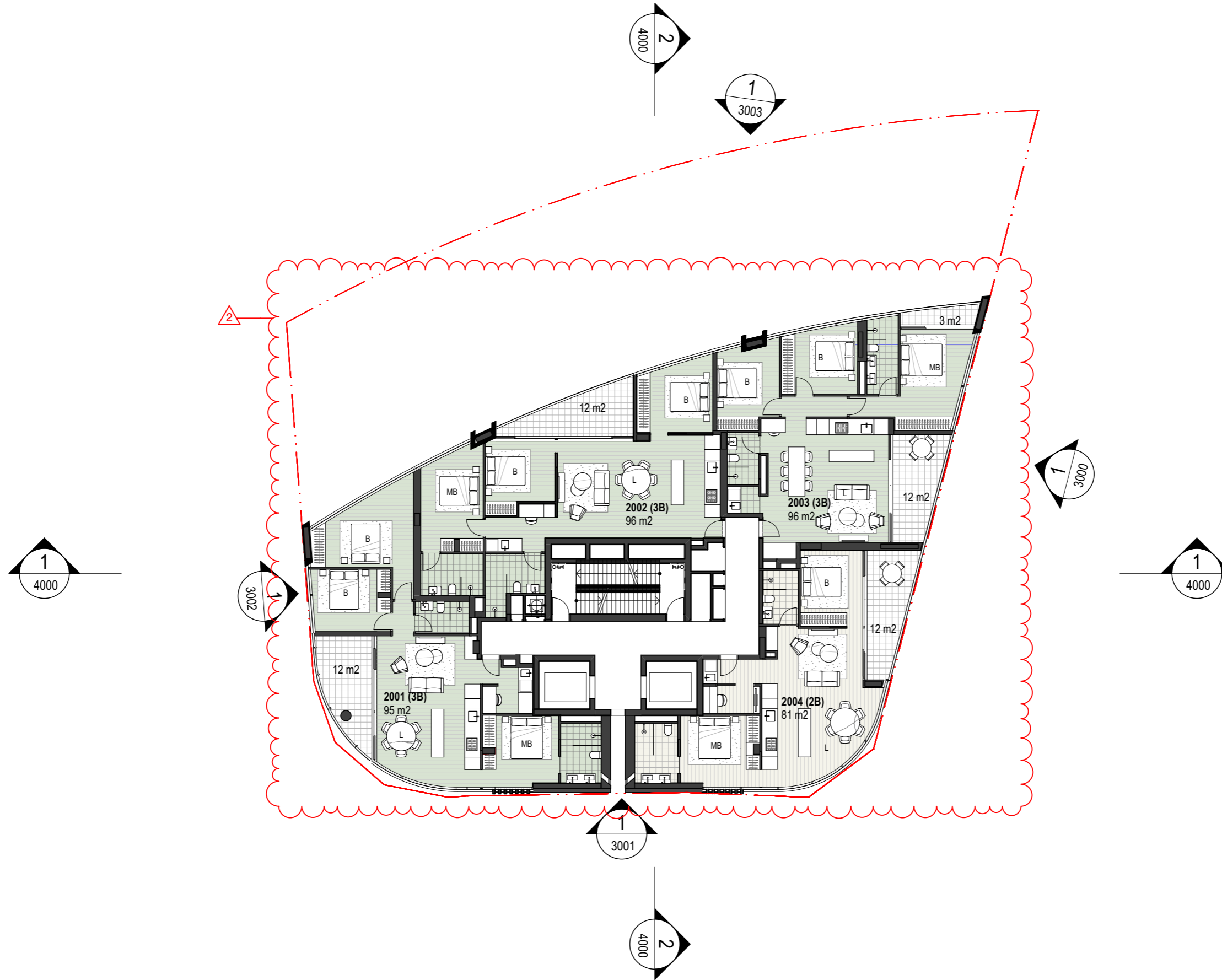
| CURRENT REVISION COMMENTS | | |
|--|-------------------------|----------|
| Rev | Current Revision | Date |
| 2 | Development Application | 05.07.18 |
| 1. UNIT 505 MODIFIED TO ACCOMODATE 3x3m IN ALL BEDROOMS. | | |
| 2. BALCONIES UNITS 502 AND 503 MODIFIED TO ACHIEVE 1m DEPTH FOR BALCONY COUNTED AREA | | |



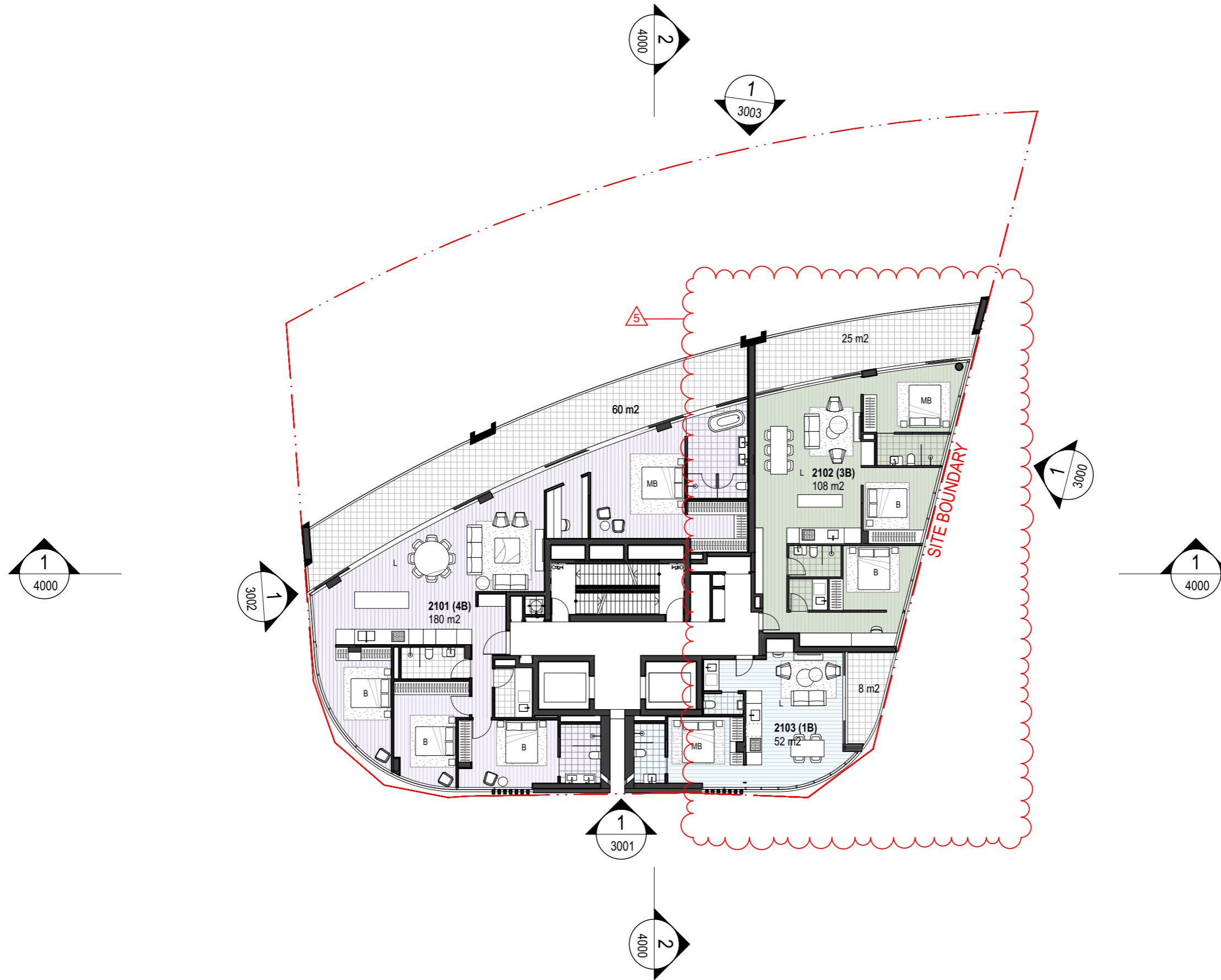
| CURRENT REVISION COMMENTS | | |
|--|-------------------------|----------|
| Rev | Current Revision | Date |
| 5 | Development Application | 12.07.18 |
| 1. UNIT 805 MODIFIED TO ACCOMODATE 3x3m IN ALL BEDROOMS. | | |
| 2. BALCONY UNIT 802 MODIFIED TO ACHIEVE 1m DEPTH FOR BALCONY COUNTED AREA. | | |
| 3. ADDITIONAL BALCONY IN UNIT 805 DELETED. | | |
| 4. BALCONY UNIT 804 INCREASED. | | |



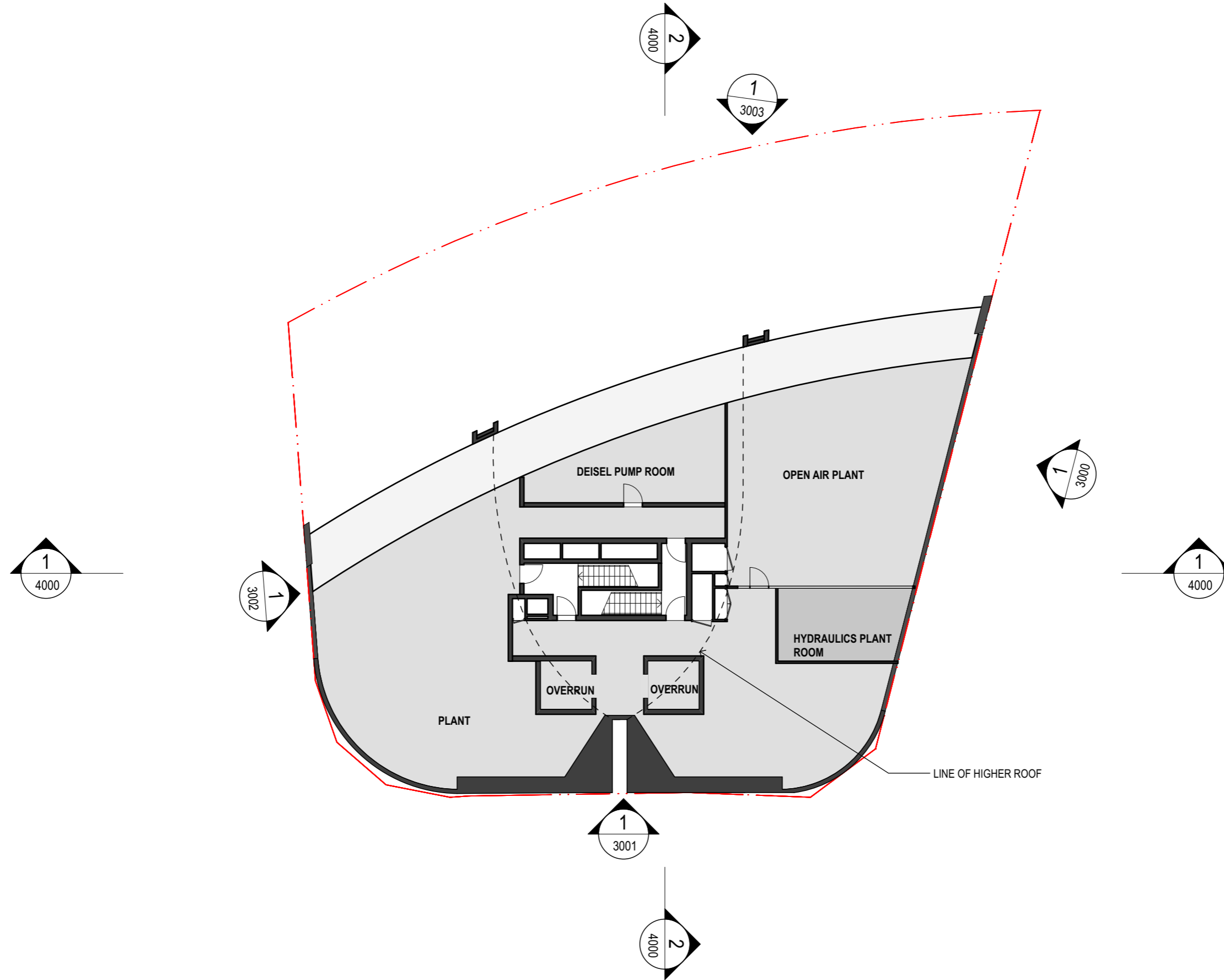
| CURRENT REVISION COMMENTS | | |
|---|-------------------------|----------|
| Rev | Current Revision | Date |
| 2 | Development Application | 12.07.18 |
| 1. UNIT 1904 MODIFIED TO ACCOMODATE 3x3m IN ALL BEDROOMS. | | |
| 2. ADDITIONAL BALCONY IN UNIT 1904 DELETED. | | |
| 3. BALCONY UNIT 1903 INCREASED. | | |



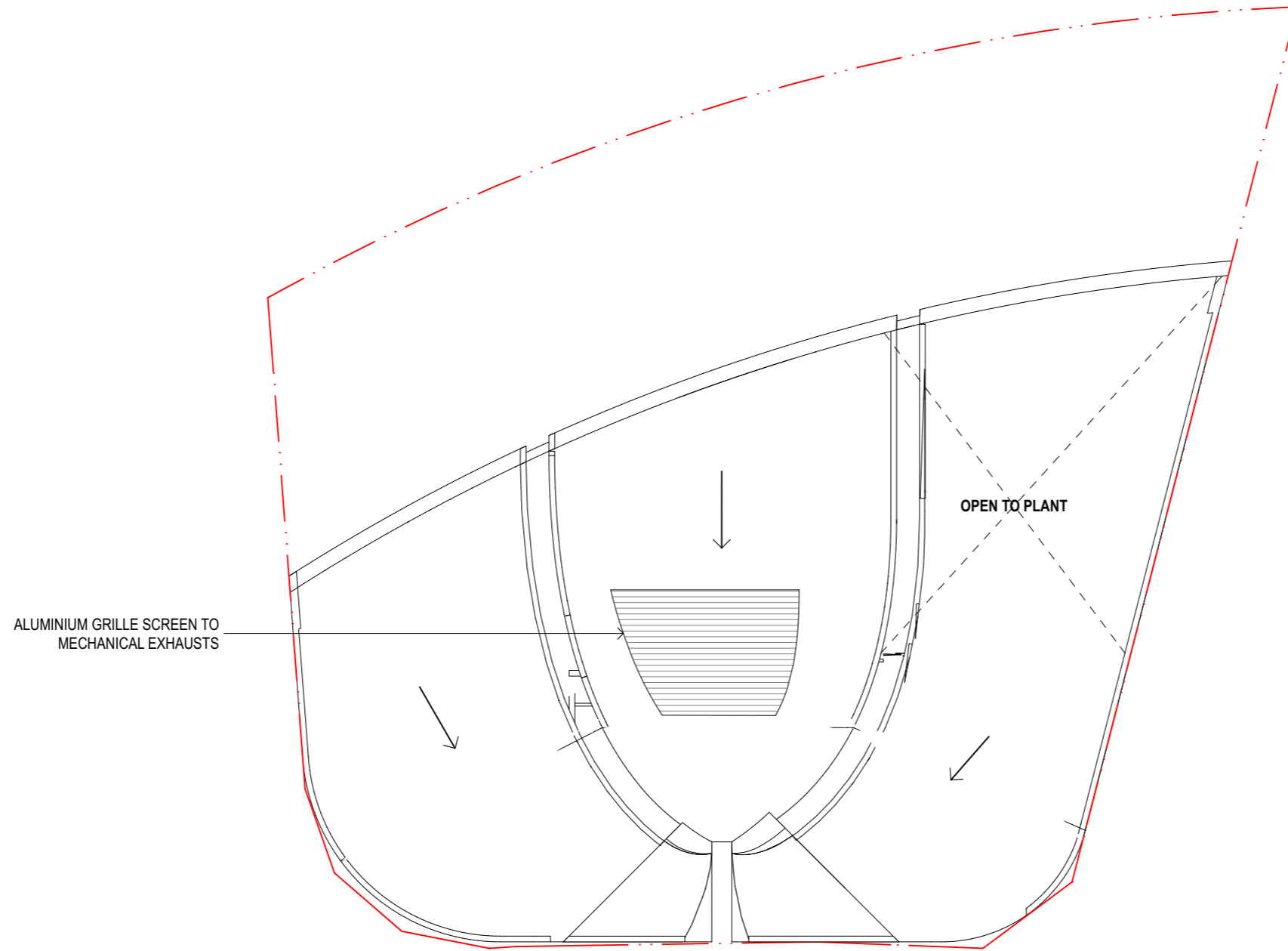
| CURRENT REVISION COMMENTS | | |
|--|-------------------------|----------|
| Rev | Current Revision | Date |
| 2 | Development Application | 05.07.18 |
| 1. LEVEL 20 INTERNAL LAYOUT CHANGED TO 3x3B AND 1x2B | | |

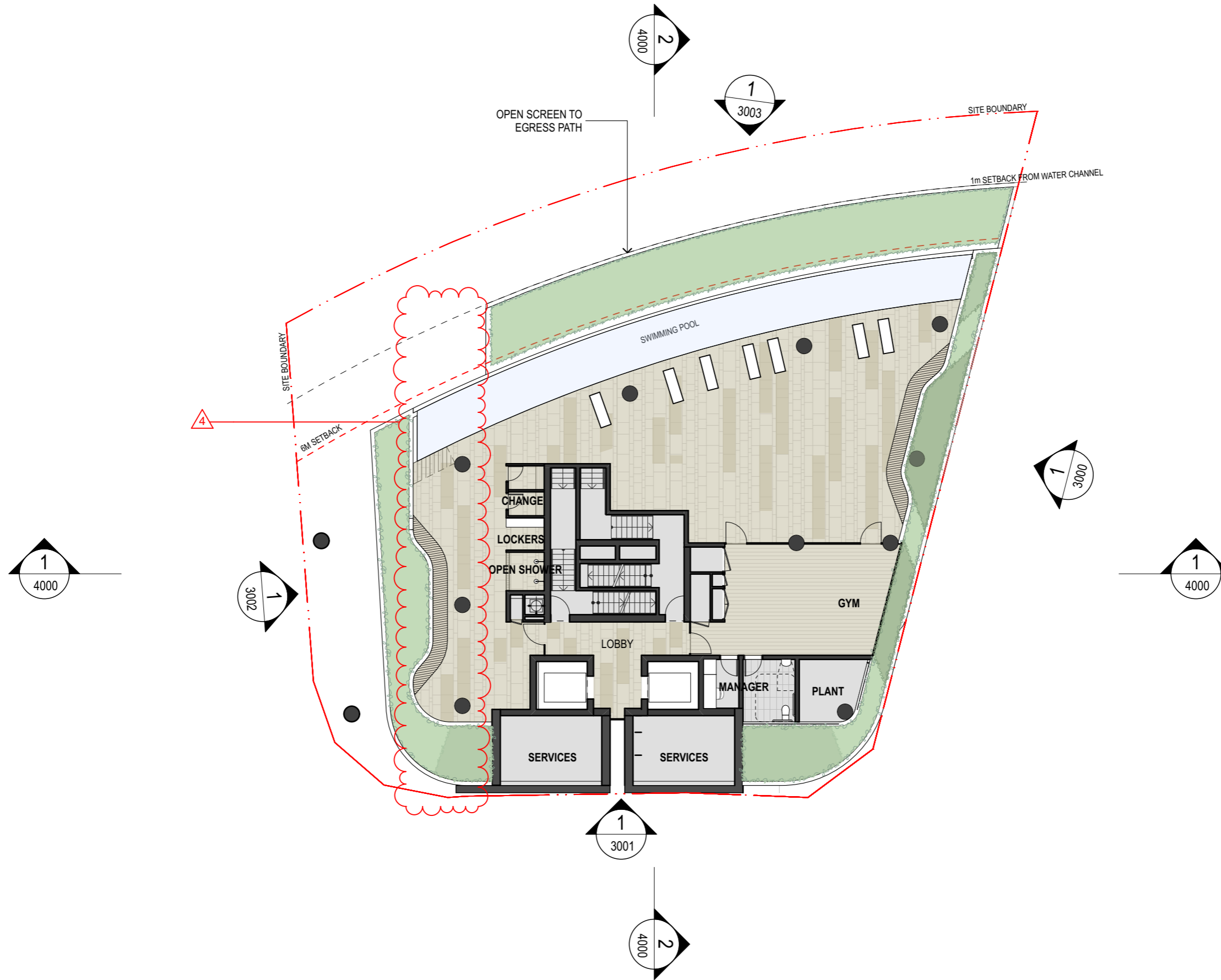


| CURRENT REVISION COMMENTS | | |
|--|-------------------------|----------|
| Rev | Current Revision | Date |
| 5 | Development Application | 05.07.18 |
| 1. LEVEL 21 INTERNAL LAYOUT CHANGED. UNIT 2102 CHANGED TO 1x3B AND 1x1B. UNIT 2101 HASN'T CHANGED. | | |



Level 22 Roof Plant





| CURRENT REVISION COMMENTS | | |
|---|-------------------------|----------|
| Rev | Current Revision | Date |
| 4 | Development Application | 13.07.18 |
| 1. COLUMNS RELOCATED TO MATCH NEW LOCATION IN GROUND FLOOR. | | |
| 2. SUBSTATION RELOCATED IN GROUND FLOOR | | |



| CURRENT REVISION COMMENTS | | |
|---|-------------------------|----------|
| Rev | Current Revision | Date |
| 4 | Development Application | 05.07.18 |
| 1. BIKE PARKING ADDED. STORAGE AREA MODIFIED. | | |
| 2. EAST WC DELETED. STORAGE AREA MODIFIED. | | |



| CURRENT REVISION COMMENTS | | |
|---|-------------------------|----------|
| Rev | Current Revision | Date |
| 4 | Development Application | 05.07.18 |
| 1. BIKE PARKING ADDED. STORAGE AREA MODIFIED. | | |



| CURRENT REVISION COMMENTS | | |
|---|-------------------------|----------|
| Rev | Current Revision | Date |
| 4 | Development Application | 05.07.18 |
| 1. BIKE PARKING ADDED. STORAGE AREA MODIFIED. | | |
| 2. MOTORCYCLE PARKING ADDED | | |

